

# Midi Profile

The Midi profile is a surface mounted LED profile that can also be recessed. The Midi profile is deeper to allow for a uniform light distribution from a profile which is still compact and low profile.

Colour:

Non-anodised, anodised silver, anodised black, anodised inox, lacquered white (RAL9016)

Construction:

Aluminium.

Length:

1000mm, 2020mm, 3000mm.

Mounting:

Double sided adhesive tape,  
Mounting clips,  
Pendant.

Covers:

Frozen, Frosted, Opal, Clear, Opal frosted, Black,  
Curved Lens 1 & 2.

End Caps:

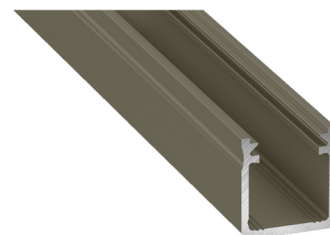
Colour match end caps with or without holes.



Non-anodised



Anodised silver



Anodised inox



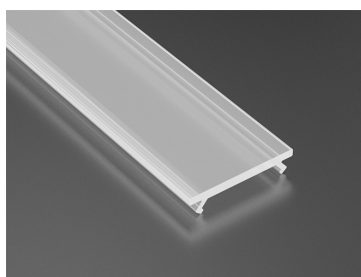
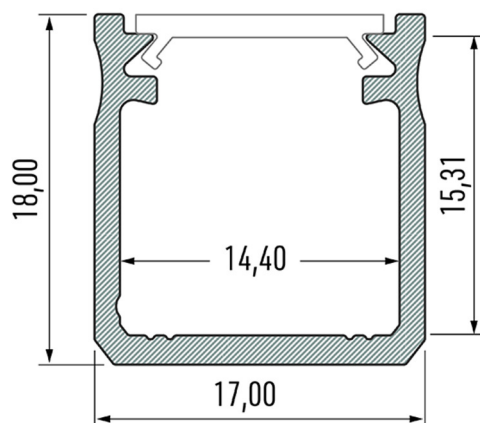
Anodised black



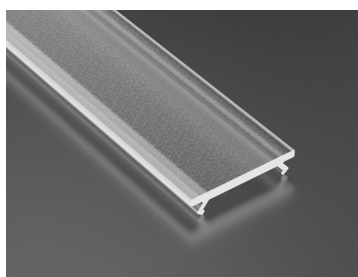
Lacquered white

# Midi Profile

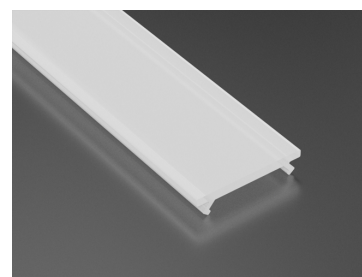
## Dimensions & Cover Options



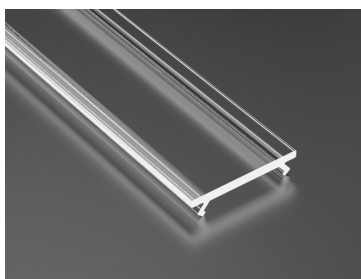
Frozen



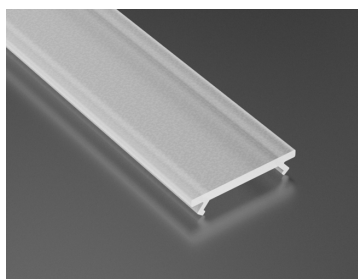
Frosted



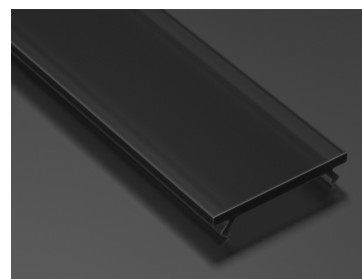
Opal



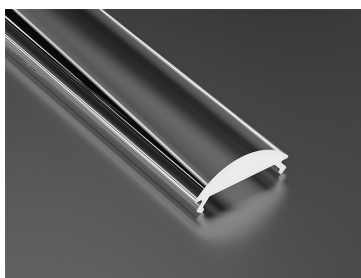
Clear



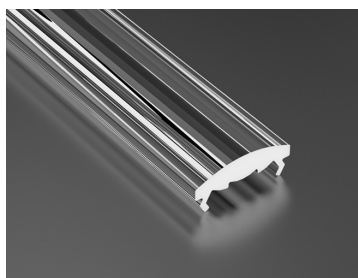
Opal Frosted



Black



Lens 1



Lens 2

# Midi Profile

## Order Codes

To specify choose one entry from each column, e.g. "MID 1000 C NA". Omit columns if not required. Accessories ordered separately.

Profile				
Name	Length (mm)	Cover	Mounting Option	Colour
MID	1000	FR (Frozen)	C (Clips)	NA (non-anodised)
	2020	FRS (Frosted)	P (Pendant)	AS (Anodised Silver)
	3000	OP (Opal)		BL (Anodised Black)
		CL (Clear)		AI (Anodised Inox)
		FO (Frosted Opal)		LW (Lacquered White)
		BL (Black)		
		L1 (Lens 1)		
		L2 (Lens 2)		

Accessories			
Accessory	Order Code	Configuration Suffix	Colour (End Caps)
Plastic End Caps	MID-EC	H (With Holes)	NA (non-anodised)
Metal End Caps	MID-ECM	S (Solid End Caps)	AS (Anodised Silver)
			BL (Anodised Black)
			AI (Anodised Inox)
			LW (Lacquered White)