



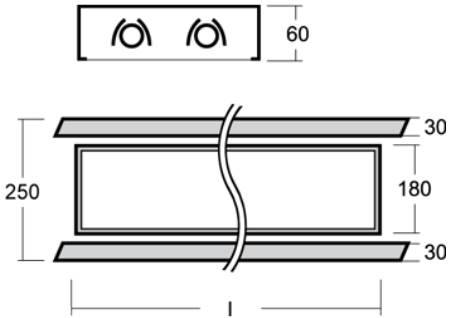
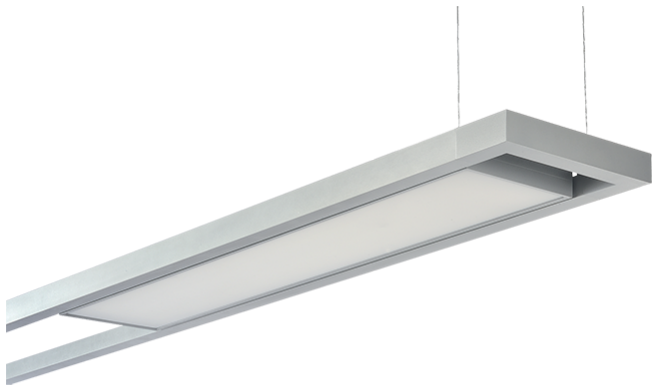
System 2 Diffused

The System 2 modular system of pendant light fixtures consists of steel profiles, which utilise both traditional and LED light sources. They can be either suspended or surface mounted.

Ideally suited to office areas and public spaces, the System 2 is available in a variety of sizes.

Dimensions:
 Lamp Wattage:
 Construction:
 Trim Options:
 IP Rating:
 Driver:

900mm, 1200mm or 1500mm x 250mm x 60mm.
 900: 2x39w, 1200: 2x52w or 1500: 2x49w. T16 G5.
 Steel.
 White, Grey or Black.
 IP20.
 Electronic/DALI.



To specify choose one entry from each column below, e.g. "SYS2D 1200 WH"

Name	Length (mm)	Option	Emergency Option	Output (lm)	Colour Temp	Trim
SYS2D (Diffused)	900		EM			WH (White)
	1200		EMS (Self Test)			GY (Grey)
	1500		EMD (DALI)			BL (Black)